

TOMMY HILFIGER

FA24
MENSWEAR





FALL '24 MENSWEAR

The birthplace of the all-American spirit, this season we pay homage to New England. From its rocky coastlines to its quaint towns, quintessential American style, traditions and icons were all born here. It's this authenticity and heritage that inspire our Fall'24 collections, reimagined for today with a distinctly Tommy twist. Made for the American dreamers, this is the spirit of modern prep in red white and blue.

For the season's menswear collection, we take the modern man's wardrobe classics and reimagine them for today. From updated polos and naval striped sweaters to corduroy chinos or heritage oxford shirts, the collection champions a contemporary approach to casual dressing throughout. Topped with lightweight outerwear, warm puffers and anything inbetween, trans-seasonal layering sits at the core of Fall's style elevation done through that New England lens.

01 ESSENTIAL COTTON CREW NECK Ivory/Desert Sky |
CHINO HARLEM GABARDINE Safari Canvas





02 LAMBSWOOL CREW NECK Orange Thunder Heather |
SOLID HERITAGE OXFORD SHIRT Shirt Blue | HARLEM CHINO PLEAT WIDE CORDUROY Desert Sky |
ESSENTIAL LEATHER BACKPACK Black | CHUNKY LEATHER CHELSEA Black

03 PREMIUM FIELD JACKET Army Green | HERITAGE OXFORD STRIPE SHIRT Royal Blue/White |
ARCHIVE CORDUROY CHINO Ancient White





04 HERITAGE OXFORD STRIPE SHIRT Orange Thunder/White |
HERITAGE OXFORD STRIPE SHIRT Terra Red/White | HARLEM SHORTS LINEN Desert Sky |
HERITAGE COURT SNEAKERS White

05 TECH HOODED JACKET Desert Sky | TECH LIGHTWEIGHT BOMBER Army Green |
PERFORMANCE JERSEY REGULAR POLO Desert Sky |
DENTON PERFORMANCE TECH CHINO Desert Sky | ESSENTIAL LEATHER BACKPACK Black |
CHUNKY LEATHER CHELSEA Black





06 SOLID HERITAGE OXFORD SHIRT Shirt Blue | ESSENTIAL COTTON CREW NECK Ivory/Desert Sky |
CHINO HARLEM GABARDINE Highland Khaki



07 MONOTYPE HEAVY TWILL HOODY Heathered Pebble |
LIQUID COTTON ESSENTIAL REGULAR POLO Army Green |
ESSENTIAL SOLID POCKET TEE Desert Sky | CHINO HARLEM GABARDINE Safari Canvas |
ESSENTIAL LEATHER DUFFLE BAG Black | THUNIT PATENT LOAFER Black



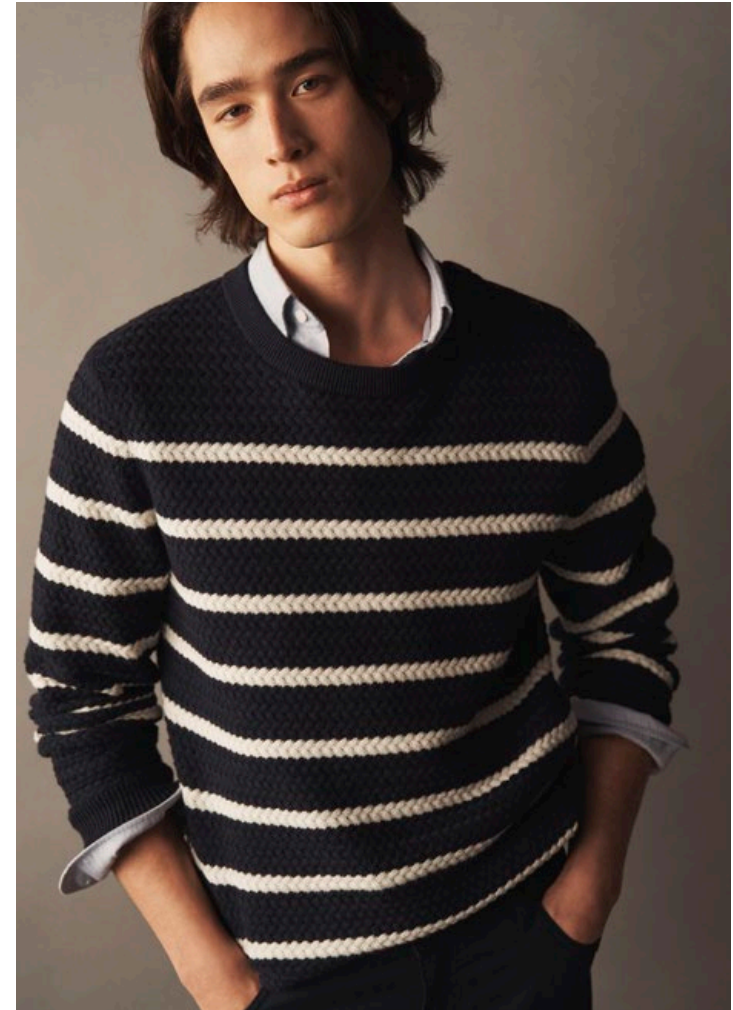


08 STRUCTURE CREW NECK Oatmilk/Desert Sky | CHAMBRAY SOLID SHIRT Indigo |
ARCHIVE CORDUROY CHINO Ancient White | CABLE BEANIE Space Blue



09 FLANNEL BLAZER Desert Sky | SOLID HERITAGE OXFORD SHIRT Royal Blue |
MERCERISED STRUCTURE LONG SLEEVE POLO Desert Sky | DENTON CLEAN CHINO Ecrú |
THUNIT PATENT LOAFER Black





10 SPLITTABLE WOOL CARCOAT Desert Sky |
HORIZONTAL STRIPE CREW NECK Desert Sky/Ivory |
LIGHT OXFORD SHIRT Optic White | DENTON CHINO Desert Sky |
CABLE BEANIE Space Blue | THUNIT PATENT LOAFER Black

11 MONOTYPE TEXTURED FLEECE Country Brown |
HEAVY BRUSHED CHECK SHIRT Monochrome Blue | ESSENTIAL SOLID POCKET TEE Desert Sky |
ARCHIVE CORDUROY CHINO Ancient White | CABLE BEANIE Space Blue





12 MIX DOWN HOODED PUFFER JACKET Deep Rouge |
ALPACA BLEND STRIPE CREW NECK Desert Sky/Rouge |
CLASSIC POPLIN STRIPE SHIRT Mid Blue/Optic White |
HARLEM CHINO PLEAT WHITE CORDUROY Desert Sky |
ESSENTIAL LEATHER WEEKENDER Black | CHUNKY LEATHER LACE UP BOOT Black



13 PREMIUM CLASSIC PEACOCK Desert Sky | CLASSIC COTTON CABLE ZIP MOCK Desert Sky | BRUSHED SHADOW CHECK SHIRT Deep Rogue | SLUB HENLEY LONG SLEEVE TEE White | DENTON CHINO Desert Sky | NAVAL CAP Space Blue | ESSENTIAL LEATHER BACKPACK Black | THUNIT PATENT LOAFER Black





14 WOOL HERRINGBONE COAT Dark Grey Heather |
SMALL CREST EMBROIDERED SWEATSHIRT Heathered Pebble |
NEW REGULAR POLO White | ESSENTIAL FLEECE SWEATPANTS Heathered Oatmilk |
NAVAL CAP Space Blue | CHUNKY LEATHER CHELSEA Black



15 DOUBLE BREASTED OVERCOAT Dark Coffee | CORDUROY OVERSHIRT Highland Khaki | SLUB HENLEY LONG SLEEVE TEE White | SLIM BLEECKER DENALI INDIGO Denali Indigo | CHUNKY LEATHER CHELSEA Cocoa





16 DOUBLE BREASTED OVERCOAT Dark Coffee |
STRUCTURE MOULINE ROLL NECK Ivory Mouline | HARLEM WOOL PANTS Hickory |
ESSENTIAL LEATHER DUFFLE BAG Black | THUNIT PATENT LOAFER Black

17 FLIGHT JACKET Mid Grey Heather | FINE MERINO WOOL POLO Ivory |
HARLEM PLEAT FLANNEL CASHMERE Hickory | CABLE BEANIE Beige |
CHUNKY LEATHER CHELSEA Black





18 DOUBLE BREASTED PINSTRIPE BLAZER Desert Sky |
FINE GAUGE MERINO ZIP MOCK Desert Sky | LIGHT OXFORD SHIRT Optic White |
SILK TIE - DEEP ROUGE | ESSENTIAL LEATHER WEEKENDER Black |
THUNIT PATENT LOAFER Black



19 ROOKIE DOWN PARKA Ivory | GIFTING WOOL BLEND FAIRISLE CREW NECK Safari Canvas | FLEX BRUSHED SOLID SHIRT Vessel Blue | HARLEM CHINO PLEAT WIDE CORDUROY Ivory | WOOL LOGO SCARF Space Blue | CHUNKY LEATHER CHELSEA Black





20 WOOL IVY JACKET Desert Sky | CABLE FLAG SWEATER Desert Sky |
BRUSHED EASY CHECK SHIRT Deep Rouge | DENTON CHINO Desert Sky |
CABLE BEANIE Beige | ESSENTIAL LEATHER BACKPACK Black |
CHUNKY LEATHER CHELSEA Black

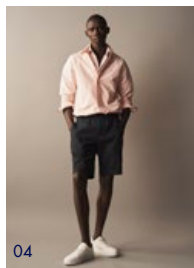


21 CASHMERE COAT Desert Sky | SOLID POLIN SHIRT Optic White |
CASHMERE PANTS Desert Sky | THUNIT PATENT LOAFER Black





22 WOOL LEATHER VARSITY BOMBER Black/Ecru | CLASSIC TUX SHIRT Optic White |
WOOL CHINO PANTS Ecru | SILK TIE Black | THUNIT PATENT LOAFER Black





01 MEDIUM LEATHER DETAIL BACKPACK Tan Mix | CHUNKY LEATHER CHELSEA Black



02 ESSENTIAL LEATHER BACKPACK Black



03 ESSENTIAL LEATHER DUFFLE BAG Black | THUNIT PATENT LOAFER Black



04 ESSENTIAL LEATHER WEEKENDER Black | CHUNKY LEATHER LACE UP BOOT Black



05 CHUNKY SUEDE LOAFER Black



06 CHUNKY LEATHER CHELSEA Cocoa

GLOBAL

Tommy Hilfiger
Danzigerkade 165
1013 AP Amsterdam
The Netherlands

Lyndsey Anderson
Senior Manager Global Communications
T: +31 (0)6 25 67 98 55
E: lyndsey.anderson@tommy.com

Melissa Lanaro
Specialist Global Communications
T: +33 (0)6 70 76 20 51
E: melissa.lanaro@tommy.com

THE AMERICAS

Tommy Hilfiger
285 Madison Avenue, Floor 9
New York, NY10017

Shawna Schmitz
T: +1 212 548 1730
E: shawnaschmitz@tommy.com

Yasmine Samatali
T: +1 212 548 1720
E: yasminessamatali@tommy.com

LATIN AMERICA

Tommy Hilfiger - ASW Group
Metrobank Tower, 14th Floor
Punta Pacifica, Isaac Hanono Missri Street
Panama City, Panama

Gabriela Arauz
T: +507 206 0555 Ext. 3036
E: garauz@aswgr.com

Isabella Costa
T: +507 206 0555 Ext. 3040
E: icosta@aswgr.com

ASIA PACIFIC

Tommy Hilfiger
17/F, Two Harbourfront
22 Tak Fung Street
Hungghom, Kowloon
Hong Kong

Emilia Cho
T: +852 6899 3327
E: emiliacho@tommy.com

Km Ho
E: kmho@tommy.com

Carol Wong
E: Carolwong@Tommy.com

AUSTRALIA

Tommy Hilfiger
3-7 McPherson Street
Banksmeadow, NSW 2019

Dianne Taylor
T: +61 419 417 591
E: dianne.taylor@pvhba.com

James Tawfik
T: +61 0450 390 635
E: james.tawfik@pvhba.com

AUSTRIA

PVH Brands Germany GmbH
Speditionstraße 7
D-40221 Düsseldorf
Düsseldorf HRB 51147

Alessandra Strassner
T: + 49 174 2764447
E: alessandrastrassner@tommy.com

BRAZIL

Tommy Hilfiger - Inbrands
Av Maria Coelho Aguiar, 215 –
CEP 05804-900
Bloco C 2° andar ou Subsolo
(Recebimento e Engenharia de Produto)
Jardim São Luiz, São Paulo, SP

Olivia Hanssen
T: +55 11 98 821- 7821
E: olivia.hanssen@inbrands.com.br

Olivia Pereira
T: +55 11 99 420-3912
E: olivia.pereira@inbrands.com.br

BULGARIA

United Partners
120 Kiril i Metodii Str.
Sofia, Bulgaria

Desislava Boyanova
T: +359 887 70 07 98
E: desislava.boianova@united-partners.com

CAMBODIA

Tommy Hilfiger
Unity International Trading Co.,
T-One Building, #53, Samdach Pan Ave,
Daun Penh, Phnom Penh, Cambodia

Jeremy Wong
T: +85593416777
E: jeremy@unity.com.kh

Sokun Chea
T: +85593836777
E: sokun.chea@unity.com.kh

CANADA

Tommy Hilfiger
285 Madison Avenue, Floor 9
New York, NY10017

Shawna Schmitz
T: +1 212 548 1730
E: shawnaschmitz@tommy.com

CHINA

Tommy Hilfiger
9/F, No. 555 Anyuan Road,
Jing'An District, Shanghai, 200040,
China

Juliana Huang
T: +86 21 22 87 14 00
E: julianahuang@tommy.com

CYPRUS

Action Pr Group
6 Kondilaki Street, 1090
Nicosia, Cyprus

Natasa Perdiou
E: Natasa.p@Actionprgroup.com

Anastasia Kremmastou
E: Anastasia.k@Actionprgroup.com

EGYPT

Nile Projects & Trading Co
281 South Eltesaen st. 5th Settlement,
New Cairo
Cairo, Egypt

Alaa Basyouni
T: +201007416135
E: alaa-basyouni@nileprojects-fashion.com

FRANCE

KCD Paris
13 Rue du Mail
75002 Paris

Sara Pizzi
T: +33170640105
E: pizzi@kcdworldwide.fr

GCC/MIDDLE EAST
Z7
Dubai Design District
Building 5
Office B306
P.O Box 333020
Dubai, UAE

Maha Osman
T: +971 4 447 7238
E: maha@z7communications.com

Sahithya Shetty
T: +971 4 447 7238
E: sahithya@z7communications.com

Ibrahim Ahmed
T: +971 4 447 7238
E: ibrahim@z7communications.com

GERMANY

PVH Brands Germany GmbH
Speditionstraße 7
D-40221 Düsseldorf
Düsseldorf HRB 51147

Alessandra Strassner
T: + 49 174 2764447
E: alessandrastrassner@tommy.com

GREECE

Outstand Communications
40 Kyriazi & Kassaveti Str.
Kifissia 14562, Athens

Alexia Sakellariou
T: +30 21 03 31 10 00
E: a.sakellariou@outstand.gr

HONG KONG

Tommy Hilfiger
17/F, Two Harbourfront
22 Tak Fung Street
Hungghom, Kowloon

Wing Ching
E: wingching@tommy.com

INDIA

Tommy Hilfiger
N° 4, Brunton 1st Cross Road
Bangalore 560025

Aadhya Gupta
T: + 91 995 849 4608
E: aadhya.gupta@th-india.com

INDONESIA

Tommy Hilfiger
PT Mitra Adiperkasa TBK
Level 28, Sahid Sudirman Center
Jalan Jendral Sudirman Kav. 86
Jakarta, Pusat 10220

Hammarliandi K
T: +62 21 80 64 82 55 ex 82166
E: hammarliandi.k@map.co.id

ISRAEL

Factory 54 | Irani Corp
Derekh Ben-Zvi, Tel Aviv-Yafo
Tel-Aviv, TLV, 6810431 II

Shir Ifrach
T: +972546268175
E: shirif@iranigroup.co.il

Emmanuelle Silberstein
T: +972 54 45 46 555
E: emmanuelles@iranigroup.co.il

ITALY

Tommy Hilfiger Italy
Via Podgora 2
20122 Milan

Valentina Villa
T: +39 348 62 79 609
E: valentina.villa@tommy.com

JAPAN

Tommy Hilfiger Japan
16 Floor Hibiya Parkfront
2-1-6 Uchisaiwaicho Chiyoda-Ku,
Tokyo 100-0011

Miyuki Ozawa
T: +813 66 33 08 07
E: miyukiozawa@tommy.com

Natsuki Munakata
T: +813 66 31 37 09
E: natsukimunakata@tommy.com

KOREA

Tommy Hilfiger
Handsome Corp.
195 Gangdong-Daero,
Gangdong-Gu
Seoul, Korea, 05402

Soo Choi
E: soo.choi@thehandsome.com

MALAYSIA

Tommy Hilfiger
Level 6-3, Menara Khuan Choo
75A, Jalan Raja Chulan
Kuala Lumpur, Malaysia 50200

Joyce Wong
T: +60 32 11 07 870
E: joycewong@tommy.com

MEXICO

Tommy Hilfiger
Boulevard Manuel Ávila Camacho No.5
Torre C, Piso 22,
Col. Fraccionamiento Lomas de Sotelo
Naucalpan de Juárez, Estado de México,
CP 53390

Georgina Franco Su
T: +52 (55) 30 00 52 95
E: gfranco@grupoaxo.com

Jaime Carmona Estrada
T: +52 (55) 44 90 65 95
E: jcarmonae@grupoaxo.com

PHILIPPINES

Tommy Hilfiger
Stores Specialists, Inc.
5th Floor, Midland Bldg.
403 Sen Gil Puyat Ave.
Makati City, Philippines, 1209

Michelle Suarez
T: +63 890 1239
E: mhsuarez@rgoc.com.ph

ROMANIA

Pandorra
Str. Putul Lui Zamfir, Nr 23
Sector 1, Bucharest

Raluca Stana
T: +40 07 66 27 913
E: raluca.stana@pandorrapstyle.ro

SINGAPORE

Tommy Hilfiger
491B River Valley Road
14-01 Valley Point
Singapore 248373

Joyce Wong
T: +60 32 11 07 870
E: joycewong@tommy.com

SPAIN

Finally
Conde de Xiquena 4-2°
28004 Madrid

Hugo Aragón
T: +34 91 52 15 028
E: haragon@finallypress.com

SWITZERLAND

PVH Brands Germany GmbH
Speditionstraße 7
D-40221 Düsseldorf
Düsseldorf HRB 51147

Alessandra Strassner
T: + 49 174 2764447
E: alessandrastrassner@tommy.com

TAIWAN

Tommy Hilfiger
17F, No.109, Sec. 3, Minsheng E. Road
Songshan District, Taipei 105402, Taiwan

Wacken Huang
E: wackenuang@tommy.com

THAILAND

Tommy Hilfiger
Central Marketing Group
3388/25-37 Sirinrat Building
14th Floor,Rama IV Rd., Klong-Ton,
Klong-Toey, Bangkok 10110, Thailand

Onteera Phentrakarn (Paytong)
E: onteera.ph@cmg.co.th

TURKEY

Tommy Hilfiger Turkey
Rumelihisari Mah. Yildirim Oğuz Göker Cad.
Orkide Sok. No:1 Mayadrom Ofis Park
34335 Akatlar / Istanbul

Anita Koncabahar
T: +90 2123 714 129
E: anita.koncabahar@tommy.com

UK

KCD London
118-120 Great Titchfield Street
W1W6SR London

Samantha Armitage
T: +447896745613
E: armitage@kdcworldwide.co.uk

VIETNAM

Tommy Hilfiger
Au Chau Fashion & Cosmetics Co., LTD
Level 12, Sonatus Building,
15 Le Thanh Ton Street, District 1
Ho Chi Minh City, Vietnam

Tran Tuan Ninh
T: +84 28 3827 5333
E: ninh.trantuan@acfc.com.vn

